

HYDRALINE™ LL20B TEXTURED

LINEAR LOW-DENSITY TEXTURED POLYETHYLENE – 23' LAYFLAT



PRODUCT DESCRIPTION

HydraLine™ LL20B1 & LL20B2 are co-extruded 1-side or 2-side smooth-edge textured linear low-density polyethylene (LLDPE) geomembranes manufactured with high-quality resins providing exceptional elongation, multiaxial stress resistance, and flexibility. HydraLine™ LLT-Series features include resistance to stress cracking and U.V. stabilization for long-term performance and resistance to degradation. The textured surface incorporates increased friction angles to provide higher stability on steep slopes, stabilization for earthen and secondary geosynthetics, and increased resistance for work-site safety.

HydraLine™ LLT-Series requires specialized welding equipment and certified welding technicians to be properly installed. Welding is completed with hot wedge fusion welders on long field seams, and extrusion welders are used on detail work and pipe penetrations.

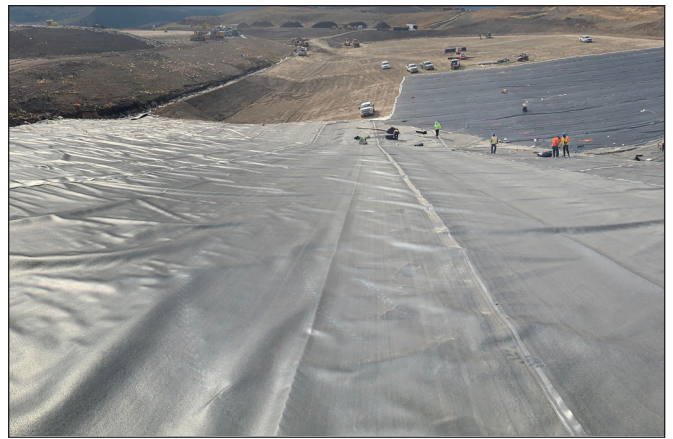
HydraLine™ LL20B1 & LL20B2 textured geomembranes are available in black as standard and in custom colors with minimum order quantity requirements.

PRODUCT USE

HydraLine™ LL20B1 & LL20B2 geomembranes are used in applications requiring increased frictional resistance, U.V. stability and flexibility to conform to a variety of surfaces. HydraLine™ LLT-Series geomembranes are a cost effective solution for larger size lining projects. This product is successfully used in landfills, waste water treatment lagoons, animal waste lagoons, mining applications and many more.

SIZE & PACKAGING

HydraLine™ LL20B1 & LL20B2 geomembrane liners are shipped to job sites in large 23' wide layflat master rolls tightly rolled on a heavy-duty core and deployed by on site equipment. Seaming by certified installation technicians occurs in the field by heat fusion welding equipment.



Landfill Cover

PRODUCT

PART

HydraLine™ LL20B1.....LL200BB1

HydraLine™ LL20B2.....LL200BB2

APPLICATIONS

- Decorative Ponds & Lakes
- Landfill Covers & Caps
- Golf Course Ponds
- Golf Green & Bunker Liners
- Gas Collection Covers
- Pond & Lake Liners
- Irrigation Reservoirs
- Waste Water Treatment Lagoons
- Mining Tailing & Heap Leach Pads
- Secondary Containment
- Canal Liners

HYDRALINE™ LL20B TEXTURED

LINEAR LOW-DENSITY TEXTURED POLYETHYLENE – 23' LAYFLAT

		HYDRALINE™ LL20B1 & LL20B2	
		IMPERIAL	METRIC
PROPERTIES	TEST METHOD	TEST VALUE	TEST VALUE
APPEARANCE		Black, & Custom Colors Available with Minimum Order Quantity	
CORE THICKNESS (NOMINAL)		20 Mils	0.50 mm
ASPERITY HEIGHT (MIN. AVG.)	ASTM D7466	16 Mils	0.40 mm
FORMULATED DENSITY (MAX.)	ASTM D1505 / ASTM D792	0.939 g/cc	0.939 g/cc
TENSILE PROPERTIES (MIN. AVG.) - BREAK STRENGTH - BREAK ELONGATION	ASTM D6693 Type IV	30 lb/in 250 %	5 N/mm 250 %
2% MODULUS (MAX.)	ASTM D5323	1200 lb/in	210 N/mm
TEAR RESISTANCE (MIN. AVG.)	ASTM D1004	11 lb	50 N
PUNCTURE RESISTANCE (MIN. AVG.)	ASTM D4833	22 lb	100 N
AXI-SYMMETRIC BREAK RESISTANCE (MIN.)	ASTM D5617	30 %	30 %
CARBON BLACK CONTENT	ASTM D4218	2.0-3.0 %	2.0-3.0 %
CARBON BLACK DISPERSION	ASTM D5596	Pass	Pass



HydraLine™ LL20B1 & LL20B2 are co-extruded 1-side or 2-side smooth-edge textured linear low-density polyethylene (LLDPE) geomembranes manufactured with high-quality resins providing exceptional elongation, multiaxial stress resistance, and flexibility. HydraLine™ LLT-Series features include resistance to stress cracking and U.V. stabilization for long-term performance and resistance to degradation. The textured surface incorporates increased friction angles to provide higher stability on steep slopes, stabilization for earthen and secondary geosynthetics, and increased resistance for work-site safety.

Note: To the best of our knowledge, unless otherwise stated, these are typical property values and are intended as guides only, not as specification limits. Chemical resistance, odor transmission, longevity as well as other performance criteria is not implied or given and actual testing must be performed for applicability in specific applications and/or conditions. VIAFLEX MAKES NO WARRANTIES AS TO THE FITNESS FOR A SPECIFIC USE OR MERCHANTABILITY OF PRODUCTS REFERRED TO, no guarantee of satisfactory results from reliance upon contained information or recommendations and disclaims all liability for resulting loss or damage. Limited Warranty available at www.viaflex.com

VIAFLEX, INC.

821 W Algonquin Street Sioux Falls, SD 57104
Ph: +1 (605) 335-0174 • TF: +1 (800) 635-3456
© 2022 VIAFLEX INC. All rights reserved.

sales@viaflex.com
www.viaflex.com



27-0100 09/22